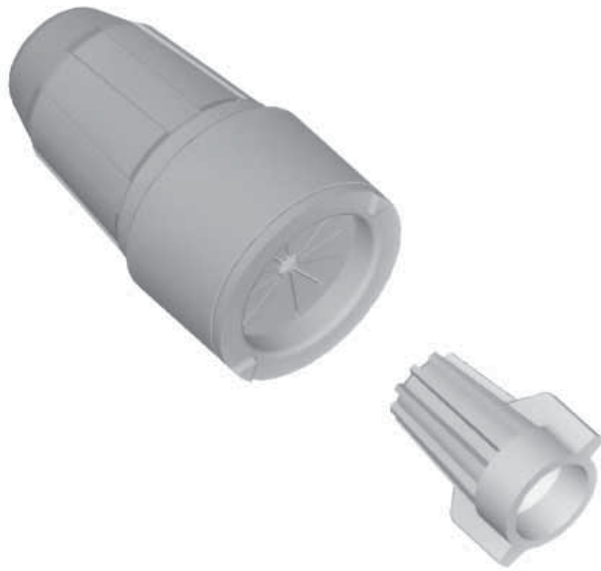




DS-500 DRI-SPLICE WIRE CONNECTORS

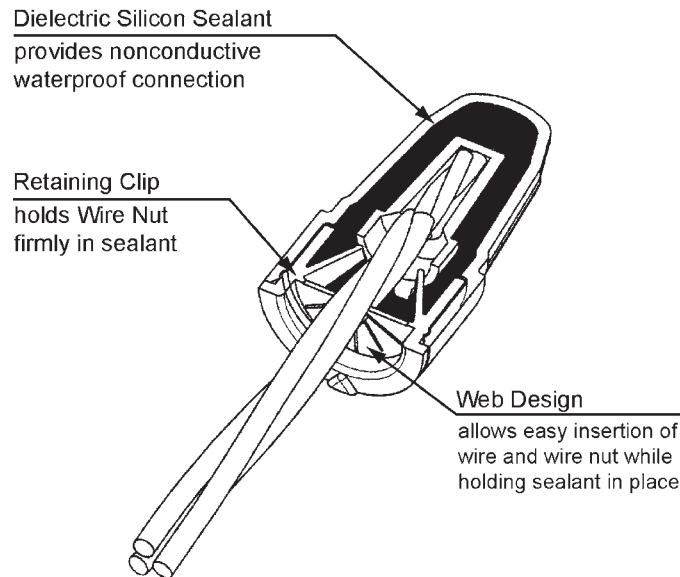
DS-2A-0597



FAST, EASY, RELIABLE CONNECTIONS

SPEARS® NEW DS-500 DRI-SPLICE WIRE CONNECTOR allows system integrity checks prior to sealing. It is the fast, reliable and clean way of making positive, waterproof connections you can depend on. Simply twist Wire Nut on and insert into dielectric silicon sealant cartridge. There's no slipping or tangling of wires as is often encountered in direct-insertion type connectors. Specially designed for irrigation systems and low voltage lighting, marine and security systems and suitable for direct burial.

- Conventional Twist-On Wire Nut Connectors**
 Allows full assembly and check of connection prior to sealing. Accepts wire combinations from 3 #22 to 3 #10 AWG solid or stranded copper wire. UL and CSA Approved.
- “No-Mess” Sealant Cartridge**
 Special “No-Mess” cartridge design fully encloses sealant pre-fill for cleaner installations. Internal interlock prevents disengagement of wire nut from sealant cartridge, yet allows disassembly for connection alterations. Simply insert assembled connection into sealant cartridge — you're done!
- Premium Dielectric Silicon Sealant Pre-Fill**
 Full coating action when inserted into the Pre-Fill DS-500 Sealant Cartridge provides a dependable moisture barrier — even in standing water.
- Suitable for Direct Burial**
 The DS-500 is suitable for direct burial in systems of up to 30 volts. Excellent choice for irrigation and other low voltage applications.



Basic Specifications

Connector Nut:	Twist-on Spring Type UL/CSA Approved
Wire Combinations:	Minimum: 3 #22 Maximum: 4 #12 or 3 #10
Temperature Rating:	167°F (75°C)
Maximum Voltage:	30v
Sealant Type:	Dielectric Silicon Grease -45° to 400°F



Quality Systems Certificate No. 293
Corporate Facilities, Sylmar, CA
Assessed to ISO 9001: 2008

The smart way to assemble reliable waterproof connections. . .

CONNECT & INSPECT. . .



. . . TEST . . .



. . . AND SEAL!



“Faulty connections and imperfect insulation are the primary causes of electrical failure. . . The importance of mechanically sound, well insulated and water-tight connections cannot be overemphasized.”

— Turf Irrigation Manual

SPEARS® DS-500 DRI-SPLICE allows inspection, test and verification of proper system connections and operation prior to water-tight sealing. Eliminates system failures — saves time and materials!



SPEARS® MANUFACTURING COMPANY • CORPORATE OFFICE

15853 Olden St., Sylmar, CA 91342 • PO Box 9203, Sylmar, CA 91392
(818) 364-1611 • www.spearsmfg.com



PACIFIC SOUTHWEST

15860 Olden St.
Sylmar (Los Angeles), CA 91342
(818) 364-1611 • (800) 862-1499
Fax (818) 367-3014

ROCKY MOUNTAIN

4880 Florence St.
Denver, CO 80238
(303) 371-9430 • (800) 777-4154
Fax (303) 375-9546

UTAH

5395 West 1520 South
Salt Lake City, UT 84104
(303) 371-9430 • (800) 777-4154
Fax (303) 375-9546

SOUTHEAST

4205 Newpoint Pl., Suite 100
Lawrenceville (Atlanta), GA 30043
(678) 985-1263 • (800) 662-6326
Fax (678) 985-5642

MIDWEST

1 Gateway Ct., Suite A
Bolingbrook (Chicago), IL 60440
(630) 759-7529 • (800) 662-6330
Fax (630) 759-7515

NORTHWEST

4103 C St. NE Suite 200
Auburn (Seattle), WA 98002
(253) 939-4433 • (800) 347-7327
Fax (253) 939-7557

SOUTH CENTRAL

1000 Lakeside Parkway
Flower Mound, TX 75028
(469) 528-3000 • (800) 441-1437
Fax (469) 528-3001

NORTHEAST

590 Industrial Dr., Suite 100
Lewisberry (Harrisburg), PA 17339-9532
(717) 938-8844 • (800) 233-0275
Fax (717) 938-6547

FLORIDA

9563 Parksouth Court
Orlando, FL 32837
(407) 843-1960 • (800) 327-6390
Fax (407) 425-3563

INTERNATIONAL SALES

15853 Olden St.
Sylmar (Los Angeles), CA 91342
(818) 364-1611 • Fax (818) 898-3774